

# Pedestals SLD – Standard finishes



.mdd

## Mobile pedestal without handles



26 Aluminum  
satinato



67 White pastel



154 Anthracite



08 Black

## SKP13

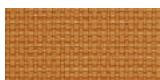
### Fabric Nemo



NE-1 Beige



NE-2 Yellow



NE-3 Orange



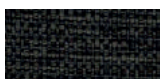
NE-5 Red



NE-9 Green



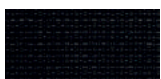
NE-10 Grey



NE-14 Graphite



NE-15 Navy blue



NE-16 Black



NE-17 Blue

#### Technical data:

Material	polyester 100%
Fabric weight	366g/m2
Abrasion resistance rubs	PN_EN ISO 12947 - 2:2 100,000
Pilling resistance	scale 1-8, max. 8, PN-EN ISO 105 - B02 (3-4)
Colour fastness to light	scale 1-5, max. 5, PN-EN 1021 - 2,
Colour fastness to rubbing	PN-EN 1021 - 1
	skscale 1-5, max. 5, EN ISO 105x12
	(wet/dry) 4-5

### Fabric Runner - second price group



R-63034 Orange



R-64089 Red



R-66063 Blue



R-60011 Grey



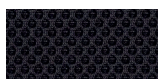
R-68056 Green



R-66064 Navy  
Blue



R-60999 Black



R-60025  
Graphite



R-61128 Beige



R-68110  
Dark green

#### Technical data:

Material	polyester 100%
Fabric weight	510 g/lm (16.45 oz./lin.yd.)
Abrasion resistance rubs	BS EN ISO 12947-2
	70,000 Martindale cycles
Pilling resistance	scale 1-5, max 5, EN ISO 12945-2 (4-5)
Colour fastness to light	scale 1-8, max 8, EN ISO 105-B02 (5-7)
Colour fastness to rubbing	scale 1-5, max 5, EN ISO 105x12
	(wet/dry) 4-5
Acoustic test sound absorption	ISO 354
Flammability	BS EN 1021-2 Match, CA TB 117-2013, BS EN 1021-1 (cigarette) Class Uno UNI 9175 Class 2, EMME

## Fabric Medley – second price group



### Technical data:

<b>Material</b>	polyester 100%
<b>Fabric weight</b>	510 g/lm (16.45 oz/lin.yd.)
<b>Abrasion resistance rubs</b>	BS EN ISO 12947-2, 75,000 cykli Martindale
<b>Pilling resistance</b>	scale 1-5, max. 5, EN ISO 12945-2 (4)
<b>Colour fastness to light</b>	scale 1-8, max. 8, EN ISO 105-B02 (5-7)
<b>Colour fastness to rubbing</b>	scale 1-5, max. 5, EN ISO 105x12 (wet/dry (4-5/4-5))
<b>Acoustic test sound absorption</b>	ISO 354
<b>Flammability</b>	BS EN 1021-1 (cigarette) BS 476 Part 7, Class 2 Class Uno UNI 9174 - UNI 8457 CA TB 117-2013 ASTM E 84 Class I

## Fabric Atlantic \* – second price group



### Technical data:

<b>Material</b>	polyester 100%
<b>Fabric weight</b>	530 g/lm (17.09 oz/lin.yd.)
<b>Abrasion resistance rubs</b>	BS EN ISO 12947-2, 110,000 Martindale cycles
<b>Pilling resistance</b>	scale 1-5, max. 5, EN ISO 12945-2 (4-5)
<b>Colour fastness to light</b>	scale 1-8, max. 8, EN ISO 105-B02 (5-7)
<b>Colour fastness to rubbing</b>	scale 1-5, max. 5, EN ISO 105x12 (wet/dry)
<b>Flammability</b>	CA TB 117-2013 ASTM E 84 Class I BS EN 1021-2 (match) BS EN 1021-1 (cigarette)

## Fabric Vita – second price group




### Technical data:

<b>Material</b>	Surface: 98,5% PVC, 1,5% PU Substrate: 50% poliester, 50% Cotton
<b>Fabric weight</b>	850g/m2 ± 10% (1190G/lin. m ± 10%)
<b>Abrasion resistance rubs</b>	BS EN ISO 5470-2, 100,000 Martindale cycles
<b>Colour fastness to light</b>	6 (ISO 105 - B02)
<b>Colour fastness to rubbing</b>	wet: 4, dry: 4 (ISO 105 - X12)
<b>Flammability</b>	BS EN 1021 - (cigarette) BS EN 1021 - 2 (match) BS 5852 - (Ignition Source 5) BS 7176 - (Medium Hazard)
<b>Flexes</b>	BS EN ISO 7854 - Method B, 400.000 Flexing cycles
<b>Anti-microblal / Anti-fungal</b>	AATCC 147

\* There is a possibility of ordering the product in full colour spectrum of Atlantic range, as per Gabriel's pattern book, within 8 weeks

## Fabric Mica – second price group

			
MC-2496-64183 Pink	MC-2496-64146 Red	MC-2497-64146 Dark red	MC-2497-66006 Navy blue
			
MC-2496-66030 Blue	MC-2497-67042 Aquamarine	MC-2497-67017 Bottle green	MC-2497-68146 Green
			
MC-2497-62048 Olive	MC-2496-62093 Light olive	MC-2496-62095 Mustard	MC-2496-62096 Yellow
			
MC-2496-61008 Beige	MC-2496-60000 Light grey	MC-2497-60000 Grey	MC-2497-60021 Graphite
			
MC-2496-66031 Light blue	MC-2496-67015 Mint	MC-2497-64029 Burgundy	

### Technical data:

<b>Material</b>	post-consumer recycled polyester 97%, polyester 3%
<b>Fabric weight</b>	305 g/lm
<b>Abrasion resistance rubs</b>	60,000 rubs martindale (EN ISO 12947-2)
<b>Pilling resistance</b>	scale 1-5, max. 5 - EN ISO 12945-2, 4-5
<b>Light fastness</b>	scale 1-8, max. 8 - EN ISO 105-B02, 5-8
<b>Rubbing fastness</b>	dry: 4-5, wet: 4-5, scale 1-5, max. 5 - EN ISO 105x12
<b>Flammability</b>	CA TB 117-2013 ASTM E 84 Class I BS EN 1021-1 Cigarette BS EN 1021-2 Match BS 476 Part 7 class I

## Fabric Charles \* – second price group

			
C-01 Black	C-05 Grey	C-06 Beige	C-14 Brown
			
C-18 Rusty	C-21 Red	C-30 Pink	C-31 Marsala
			
C-32 Dark blue	C-35 Blue	C-41 Yellow	C-44 Olive
			
C-45 Green			

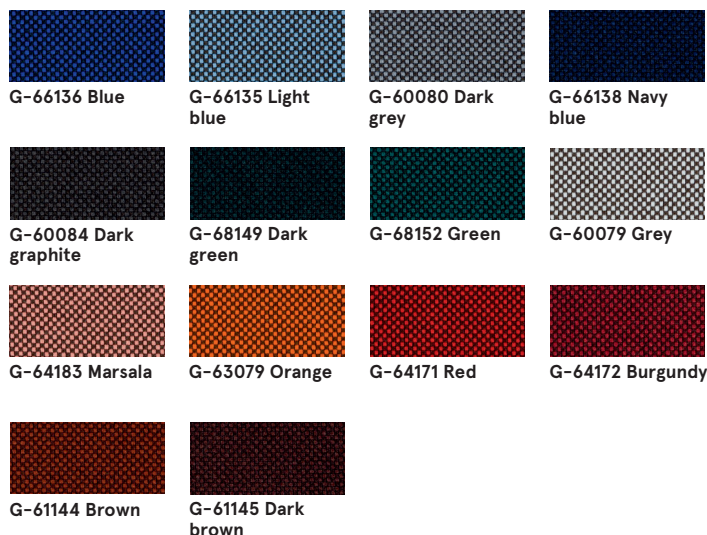
### Technical data:

<b>Material</b>	100% polyester
<b>Fabric weight</b>	433g/m <sup>2</sup>
<b>Abrasion resistance rubs</b>	90,000 Martindale cycles (EN ISO 12947-2)
<b>Pilling resistance</b>	EN ISO 12945-2, 5
<b>Light fastness</b>	EN ISO 105-B02, 5
<b>Rubbing fastness</b>	dry: 4-5, wet: 4-5, EN ISO 105x12
<b>Flammability</b>	EN 1021, 1

\* There is a possibility of ordering the product in full colour spectrum of Charles range, as per Dekoma pattern book, within the standard delivery time.



## Fabric Go Check – second price group



### Technical data:

<b>Material</b>	100% Trevira CS
<b>Fabric weight</b>	435g/lm
<b>Abrasion resistance rubs</b>	80,000 rubs martindale (EN ISO 12947-2)
<b>Pilling resistance</b>	scale 1-5, max. 5 – EN ISO 12945-2, 5
<b>Light fastness</b>	scale 1-8, max. 8 – EN ISO 105-B02, 5-8
<b>Rubbing fastness</b>	dry: 4-5, wet: 4-5, scale 1-5, max. 5 – EN ISO 105x12
<b>Flammability</b>	BS EN 1021 1&2 Cigarette and Match BS EN 1021-1 Cigarette BS 5852 Crib 5 BS 7176 Medium hazard DIN 4102 – B1 NFP 92-503/504/505 M1 ÖNORM A3800-B1-B3825-Q1 UK Class Uno UNI 9175 Class 1 I EMME FAR/JAR 25.853 (a) (i) (ii) CA TB 117-2013 DIN EN 13501-1 B-s1,d0 AM 18 – NF D 60-013-(only for fabric)

## Fabric Synergy – third price group



### Technical data:

<b>Composition</b>	95% Virgin Wool, 5% Polyamide
<b>Fabric weight</b>	400g/m2 (560g/lm)
<b>Abrasion resistance rubs</b>	100.000 Martindale cycles
<b>Colour fastness to light</b>	ISO 105 – B02 5
<b>Colour fastness to rubbing</b>	EN ISO 105x12 4-4 (dry/wet)
<b>Flammability</b>	EN 1021 – 1&2 (cigarette & match) BS 7176 Low Hazard NF D 60-013 ÖNORM B 3825 & A 3800-1 (58 kg/m3 CMHR Foam) UNI 9175 Classe 1 IM EN 13501-1 Adhered Class D, s1, d0 IMO FTP Code (Part 8) The Furniture and Furnishing (Fire) (Safety) Regulations 1988 (Domestic Cigarette and Match) BS 5852 Ignition Source 5 when FR treated BS 7176 Medium Hazard when FR treated EN 13501-1 Adhered Class B, s1, d0 when FR treated EN 13501-1 Un-adhered Class D, s2, d0 when FR treated BS 5867-2: Type B Curtains & Drapes when FR treated

## Fabric Silvertex – third price group

There is a possibility of ordering the product in full colour spectrum of Silvertex range, as per Spradling's pattern book, within 15 working days.

### Technical data:

<b>Material</b>	Topcoat: 100% Vinyl Backing: 100% Polyesterr Hi-Loft™
<b>Fabric weight</b>	685 gr/m2
<b>Abrasion resistance</b>	>300,000 cycles Martindale
<b>UV-resistance</b>	>= 7 (1000 hours, blue wool scale)
<b>Cold Crack resistance</b>	-23°C
<b>Flame retardancy</b>	NF P 92-503 / M2 EN 1021, Part 1&2 DIN 4102 B2 ÖNORM B 3825, Gruppe I – Schwerbrennbares Verhalten ÖNORM A 3800, Teil I, Qualmbildungsklasse QI – schwachqualmend IMO Res. MSC.307 (88) (2010 FTP Code) Annex I Part 8 (MED) Marine Equipment Directive in its current valid version UNI 91 75 (1987) / UNI 9175/FAI (1994) Classe I.IM (uno I EMME) UNE 23.727-90 IR /M2 EN 71-2: 2006+AI: 2007 Safety of Toys – Part 2: Flammability ECE R 11 8 (replaces Directive 95/28/EC) FMVSS 302 FAR 25/853
<b>Antimicrobial</b>	Antifungal Protection, Antibacterial Protection, Antimycotic Protection

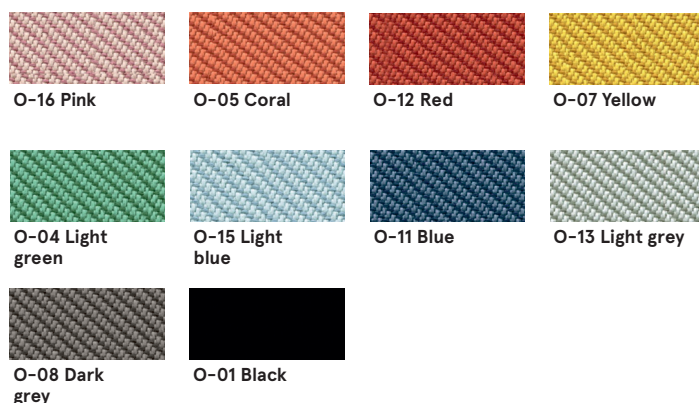
## Fabric Tessa – third price group



### Technical data:

<b>Material</b>	95% polyester, 5% acrylic
<b>Fabric weight</b>	500g/m2
<b>Abrasion resistance rubs</b>	75,000 Martindale cycles (EN ISO 12497-2)
<b>Pilling resistance</b>	EN ISO 12945-2, 4-5
<b>Light fastness</b>	EN ISO 105-B02, 4
<b>Rubbing fastness</b>	dry: 4-5, wet: 4-5, EN ISO 105x12

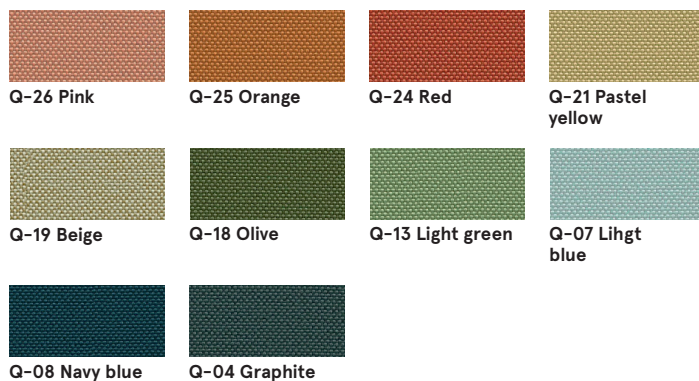
## Fabric Oceanic – third price group



### Technical data:

<b>Material</b>	100% post-consumer recycled polyester
<b>Fabric weight</b>	497g/m2
<b>Abrasion resistance rubs</b>	100,000 Martindale cycles (EN ISO 12947-2)
<b>Pilling resistance</b>	EN ISO 12945-2, 5
<b>Light fastness</b>	EN ISO 105-B02, 5
<b>Rubbing fastness</b>	dry: 4, wet: 4, EN ISO 105x12
<b>Flammability</b>	EN 1021, - 1&2 (Cigarette and Match) BS 7176 Low Hazard BS 5852 Ignition Source BS 7176 Medium Hazard

## Fabric Quest – third price group



### Technical data:

<b>Material</b>	100% post-consumer recycled polyester
<b>Fabric weight</b>	330g/m <sup>2</sup>
<b>Abrasion resistance rubs</b>	100,000 Martindale cycles (EN ISO 12947-2)
<b>Light fastness</b>	EN ISO 105-B02, 4-6
<b>Rubbing fastness</b>	dry: 4, wet: 4, EN ISO 105x12
<b>Flammability</b>	EN 1021, - 1&2 (Cigarette and Match) BS 7176 Low Hazard UNI 9175 Classe 1 IM BS 476 Part 7 Class 1Y (Adhered) EN 13501-1 Adhered Class B, s1, d0 EN 13501-1 Un-adhered Class B, s1, d0 BS 5852 Ignition Source 5 with EnviroFlam5 BS 7176 Medium Hazard with EnviroFlam5 IMO FTP Code (Part 8) with EnviroFlam5

## Fabric Grain – third price group



### Technical data:

<b>Material</b>	92% post-consumer recycled polyester 8% polyester
<b>Fabric weight</b>	615g/m <sup>2</sup>
<b>Abrasion resistance rubs</b>	100,000 Martindale cycles (EN ISO 12947-2)
<b>Pilling resistance</b>	EN ISO 12945-2, 5
<b>Light fastness</b>	EN ISO 105-B02, 5-7
<b>Rubbing fastness</b>	dry: 4-5, wet: 4-5, EN ISO 105x12
<b>Flammability</b>	BS EN 1021 1&2 Cigarette and Match BS EN 1021-1 Cigarette CA TB 117-2013

## Fabric Atlas – fourth price group



### Technical data:

<b>Material</b>	90% new wool, 10% nylon
<b>Fabric weight</b>	286g/m <sup>2</sup> , 400g/lm
<b>Abrasion resistance rubs</b>	100,000 cycles Martindale, EN ISO 12947
<b>Colour fastness to light</b>	ISO 105 B02: 6-7
<b>Colour fastness to rubbing</b>	ISO 105-X12:2001, (wet/dry) 4-5/4-5
<b>Flammability</b>	BS EN 1021-2 Match, BS EN 1021-1 Cigarette, BS 5 5852 Crib 5, BS 5852 ignition source 3, BS 5852 Part 1, NF D 60 013, UNI 9175 1IM, US Cal. Bull. 117-2013

## Leather – fourth price group



### Technical data:

<b>Material</b>	Leather type - corrected grain leather Type of finishing - pigmented leather
<b>Abrasion resistance rubs</b>	Dry: 500 cycles - min. 4 grey scale Wet: 250 cycles - min. 4 grey scale UNI EN ISO 11640
<b>Colour fastness to light</b>	Light fastness: min. 4 grey scale, UNI ISO 105-802
<b>Flammability</b>	No ignition UNI EN 1021-1-2006 BS EN 1021-1-2006